

# Northern St. Louis County

## Community Health Assessment

### Purpose

The purpose of the community health assessment is to convene a diverse stakeholder group to identify what factors affect the health of its population and what resources are available within the community to address these factors. Completing a Community Health Assessment is a core function of local public health.

### Data Sources

- Bridge to Health - BTH (2000, 2005, 2010)
- Minnesota Student Survey MSS (2004, 2007, 2010)
- Minnesota Department of Health Statistics
- Minnesota Department of Human Services
- Census Data

### Process

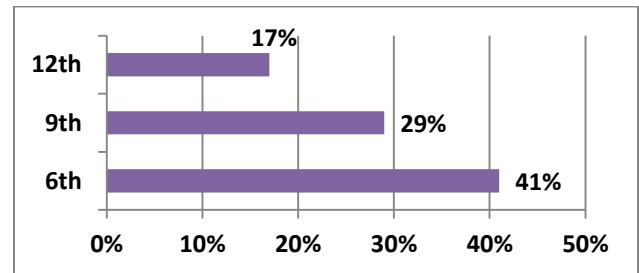
- Highlighted data sets from the above sources were compiled into a Community Health Assessment Data Profile Document. The Profile is posted online at [www.communityhealthboard.org](http://www.communityhealthboard.org) (Health Data tab)
- An opinion survey was distributed and completed by 109 St. Louis County residents.
- Community stakeholders met during 2012- 2013 to review data and identify top health issues.

### Partners Involved:

- Fairview Range Hospital
- Northern St. Louis Family Services Collaborative
- Salvation Army
- AEOA Planning
- AEOA HeadStart
- Laurentian Clinic
- Virginia Medical Center
- Ely Community Member
- Ely Community Resource Agency
- School Nurse

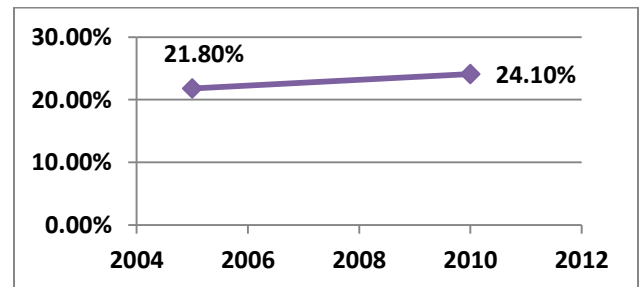
### Priority: Mental Health

The percentages of adolescents who reported feeling under great pressure in the last 30 days (2010) are 12<sup>th</sup> graders - 41%, 9<sup>th</sup> graders 29%, 6<sup>th</sup> graders - 17% (MSS).



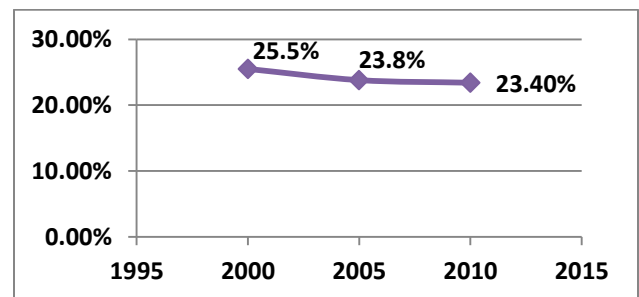
### Priority: Obesity

According to data from Bridge To Health, from 2005 to 2010, percentage of adults reported as obese increased from 21.8% to 24.1% (BTH).



### Priority: Access to Dental Care

Percentage of adults who reported as postponing dental work in the past year were in 2000- 25.5%, 2005- 23.8%, 2010- 22.4% (BTH).



### **Priority: Percentage of Female Head of Household in Poverty**

*According to Minnesota Department of Health, percentages of single females with children under 18 living in poverty 2006-2010 were 44.3% (MDH).*

### **Priority: Substance Abuse**

*The percentages of adolescents who reported as using marijuana on one or more days in the last two months (2010) were 6<sup>th</sup> graders- 2%, 9<sup>th</sup> graders- 20%, and 12<sup>th</sup> graders- 38% (MSS).*

### **Priority: Uninsured/Underinsured**

*Percentages of adults who reported as uninsured were 2000 – 4.8%, 2005- 9.1% and 2010- 8.3% (BTH).*

### **Priority: STD'S – STI's – Sexual Activity**

*According to the Bridge to Health survey results, the percentage of Sexually Transmitted Diseases (STD's) in St. Louis County is 3% (2010)*

### **Priority: Childhood Vaccination – Pertussis**

*According to the Minnesota Department of Health, percentage of childhood immunization vaccine series completed in 2010- 53% and 2011- 60.3% (MDH).*

### **Priority: Health Screenings (e.g. Prenatal and Colon)**

*According to Bridge to Health, in 2010, % of adults who have never had screening were for blood cholesterol- 12.9%, blood pressure- 3.7%, colon- 30.9% and mammogram- 10.3% (BTH).*

### **Priority: Smoking in Pregnancy**

*Percentage of mothers who smoked during pregnancy  
1996-2000 – 22%  
2001-2005- 22.6%  
2006-2010- 20.3%*

